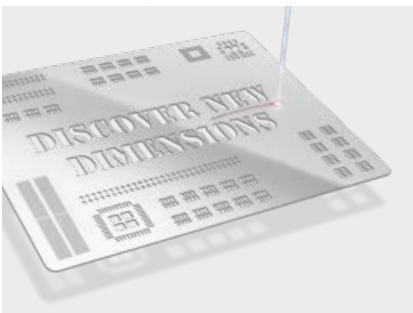


SMT Stencils

LPKF StencilLaser G 60120

- Unrivalled performance
- Large cutting range
- Smallest apertures
- Best accuracy and precision

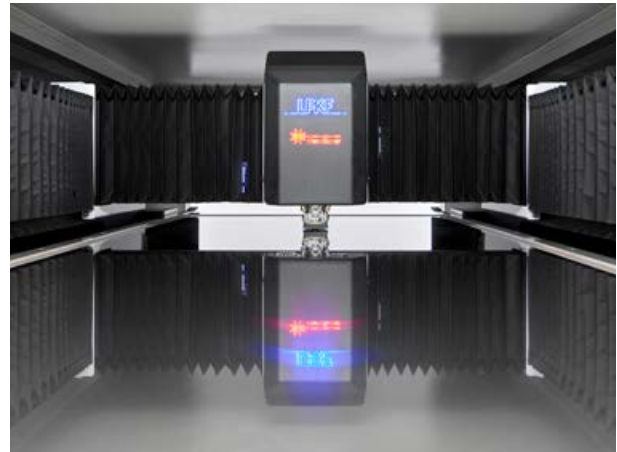


LPKF StencilLaser G 60120 – Maximum Productivity, Cutting Range and Reliability

The new flagship in the SMT industry: the StencilLaser G 60120 offers the well-known top-level accuracy and high performance for a large cutting range - guaranteeing optimal results.

The LPKF Stencil Laser G 60120 is based on the proven and reliable G 6080 platform and offers an even larger cutting range making it the right choice for demanding stencil applications such as 5G antennas and LED lightings. Therefore, the system unites the process knowledge of over 20 years with the requirements of new applications in the field.

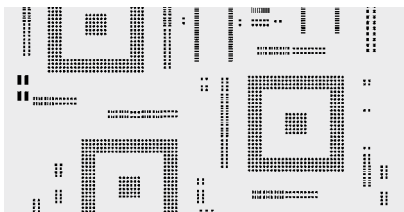
To meet different customer needs, the 60120 is available as a standard StencilLaser as well as a MicroCut version. This allows even the smallest apertures and highest packing densities to be produced for a large cutting range.



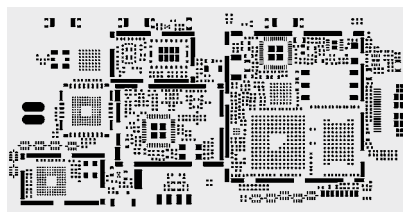
LPKF StencilLaser G 60120

Laser class	1
Speed	Please refer to: Reference Layouts: Fast Facts
Cutting Range (X/Y)	600 mm x 1200 mm (23.6" x 47.2")
Maximum frame size (X/Y/Z)	750 mm x 1500 mm x 40 mm (29.5" x 59.0" x 1.6")
Maximum loose sheet size (X/Y)	650 mm x 850 mm (25.6" x 33.5")
Maximum material thickness	Up to 1 mm (40 mil)
Axial precision	± 2 µm
Power consumption	3500 VA
Dimensions (W x H x D)	1530 mm x 1920 mm x 2020 mm (61" x 75" x 80")
Weight	~ 2450 kg

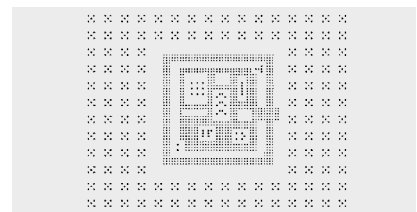
Reference Layouts: Fast Facts



Reference Layout A:
Stainless steel, 150 µm (6 mil) thick
Number of apertures: 14 157
Speed: Up to 23 400 apertures per hour



Reference Layout B:
Stainless steel, 100 µm (4 mil) thick
Number of apertures: 11 676
Speed: Up to 30 200 apertures per hour



Reference Layout C:
Stainless steel, 40 µm (1.6 mil) thick
Number of apertures: 18 000
Speed: Up to 51 200 apertures per hour

